



## **RPA MEMBERSHIP PACK 2025/26**

### ***Welcome to Red Players Academy of Drama, Acting & Contemporary Performance!***

*This information pack provides an overview of the Academy, our staff, key policies, and the Terms & Conditions of membership to our weekly classes and workshops.*

#### **1] THE ACADEMY**

Red Players Academy (RPA) is a professional drama school, casting agency, and creative service provider founded in Manchester by former actor, now director, academic and educator, Lee Battle.

As an elite-level provider of advanced and professional contemporary young performer training, RPA is unique and unrivalled as the only Academy of its kind in the region informed by a combination of professional industry insight across alongside the latest academic research.

Our highly regarded, fun and educational workshops are beneficial for all young people who have a keen interest in, and commitment to, acting and performance; our principal aim is to help enable the young people we work with to explore and express themselves artistically and socially through our highly dynamic and innovative approach to industry-aligned workshops and performances.

The Academy was also established to offer a comprehensive programme of professional training for young people already working, or considering a career, in acting and performance. Our talent agency, Red Players Management (RPM), provides representation to young performers aged 8-18 for professional castings in theatre, film, television, radio and commercials. Representation is typically by invitation only, usually by consideration and selection at our workshops and courses.

#### **2] THE WORKSHOPS**

The Academy's classes in Drama, Acting & Contemporary Performance introduce to our members a wide variety of practical and theoretical material via an equally wide range of teaching methods.

The content of our workshops is largely dictated by the unique cohort of each particular class, in order to ensure that the material and its delivery is appropriate for the age, ability, experience, and level of maturity of the group as a whole. Many sessions will be project-based, taking the form of rehearsals as we work towards a Showcase performance (details below) from February onwards.

Part of what makes RPA so different is a combination of both our unique and innovative approach to performer training (*the process*) and the methodology behind our own creative practice (*the product*). Combining drama, acting and movement exercises, our workshops are highly energised, personal and inclusive, yet deliberately challenging, designed to produce an ensemble of performers who share understanding and ownership of their collective ideas and creative practice.

In addition to actor-training specifically, the theoretical and practical work that members engage with on our programme contributes towards many other life skills that benefit various aspects of a member's overall wellbeing and future life: *self-confidence; working independently; team work; self-discipline; organization; imagination; memory; language and communication; presentation skills; movement and physical exercise; concentration; empathy; understanding the world around us; emotional intelligence; appreciation of art and culture*; and many more such positive attributes.

Ultimately, the dual aim of all of our work, and RPA's mission statement, is to: A) encourage and facilitate individual expression, providing a creative outlet, and giving members a voice in which to articulate themselves socially and culturally; and B) to equip members with the knowledge, skills and experiences necessary to work confidently and successfully as artists and performers.

**Our Ethos:** as an elite training provider, our workshops are designed to be highly intensive and professionally rigorous; we consider our classes to be suitable for all young people interested in the art and craft of performance, but do recognise the work is typically demanding – our approach has been found to be warm but disciplined, taxing yet highly rewarding. Uniquely, in addition to more conventional actor-training techniques, RPA has honed a specialist focus on contemporary performance; it is our core belief that authentic, truthful expression is what often lies at the heart of art and performance – we therefore seek to push boundaries, to challenge the young people we work with to question themselves and the world around them, to first find a voice and then to use it.

**Creative Movement:** while the training is deeply rooted in a conventional appreciation of drama and acting more broadly, as it is through the body that we experience and express emotion, we at RPA focus largely on a physical and embodied non-verbal performance practice (that we term creative movement) in both our teaching and creative outputs, that often allows for a purer form of expression, unfiltered through language. This physical training and resulting technique can then be applied to all forms of acting and performance (including the more conventional modes, for which our training has unique but direct enrichment) across all mediums, platforms, genres and styles.

**Contemporary Practice:** working from a variety of both well-established and more novel methods and approaches to performance, we employ ideas and techniques from diverse practitioners and styles, as well as our own, to build a new knowledge and skillset which will be channelled first into the creative development of the individual performers and then into the making of original practice. Both the training and resulting output is therefore typically experimental in nature (often employing aesthetics of deconstruction, the post-dramatic form, and 'live art' interventions) allowing for the possibility of true discovery through innovation. Through our endeavour to devise entirely new work alongside a committed attempt to respond to existing practice and material in novel ways, the contemporary practice we nurture ensures our students are uniquely positioned within industry.

**The RPA Way:** informed by a wealth of specialist knowledge on acting and performance practice, as well as first-hand experience in industry, our committed ethos to performer training is somewhat unconventional but produces demonstrably rich results. We firmly believe that via our exclusive and unrivalled approach – i.e. placing emphasis on the four core tenets that inform and underpin our method: *expression (through authentic thought and emotion)*; *embodiment (through movement and physicality)*; *play (through energy and chaos)*; and *discipline (through focus and control)* – we provide our students with an elite programme that offers a solid foundation from which to think, feel and behave more interestingly, passionately, committedly, creatively, artistically and successfully.

**Our Programme:** a non-exhaustive list of what our sessions cover might include: *physical warm-ups; drama games and task-based exercises; improvisation; trust exercises; script work and scene study; mask, mime and physical theatre; creative movement and composition; characterisation; responding to various stimuli; screen acting; contemporary theatre and live art practice; evaluation and self-reflection; methodology of key theatre practitioners; voice work; directing and approaches to staging text*. Specialist classes may also be provided in a specific area of performance (e.g. stage combat, or comedy performance) – such sessions may also be in non-acting but related fields, such as scriptwriting and filmmaking, for example. Some of these classes may be in place of a usual session, but may sometimes be scheduled as a separate class altogether. Where this is the case, there may be an additional charge depending on the nature of the workshop and its tutor.

### **3] WHAT TO WEAR**

All members are required to wear a base uniform of 'theatre blacks' to every class: i.e. plain black leggings/joggers/shorts, and a plain black vest/t-shirt/hoodie – no large logos or printed designs.

Premium t-shirts and hoodies embroidered with the Academy logo are available for purchase via the Apparel shop on our site ([redplayersacademy.com/shop](http://redplayersacademy.com/shop)) along with other RPA branded items.

All other clothing must be suitable for physical/practical work; either loose or, preferably, well-fitted clothing that allows for full freedom of movement and floor work is essential. Jeans should be avoided as they are restrictive, and garments such as skirts and crop-tops are unsuitable. Long hair should be tied back, and jewellery or other accessories should be removed for safety.

Due to the nature of our workshops, all members are also required to work in bare feet.

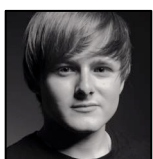
#### 4] WHAT TO BRING

It is essential that all members have with them sufficient drinking fluids, ideally a bottle of water that can be refilled during the workshops – our classes are highly practical in nature and often very physical, so it is important that participants are prepared and can stay hydrated. We also ask members not to consume chocolate, sweets, crisps, etc. immediately before or during class times.

A notebook, pencil, and highlighter-pen should be brought to every class. As the course unfolds, members will likely build a portfolio of work in the form of scripts, written feedback, and other distributed materials such as photographs, poetry and literature and so on, and should therefore have a dedicated RPA folder to keep their work together; this should be brought to every class.

#### 5] THE TEAM

The ongoing workshop programme is designed and overseen by RPA Principal **Lee Battle** in partnership with **Alex Barrett** (*Lead Tutor*), with the support of **Emily Pickup** (*Workshop Facilitator*), **Jorja Hughes** (*Workshop Assistant*), and **Jennifer Sadow** (*RPA Coordinator*).



Academy director and principal **Lee Battle** is a former professional actor, now most active as a director, agent, acting coach and academic, based between the UK and abroad. With extensive industry experience, Lee has worked for major media companies including the BBC, ITV, and Universal Pictures, and during his career has had the privilege of encountering some of the most celebrated artists in the world, including BAFTA and Oscar-winning actors and directors, as well as esteemed scholars and practitioners. Credits as an actor include *Coronation Street*, *Doctors*, *The Royal*, *Casualty*, *Wire in the Blood*, *The Street*, and *Vincent*; film roles include *Awaydays* and *Robin Hood*. Lee has both performed in and directed many theatre productions, and has produced award-winning films screened at national and international festivals. Lee has a first-class degree in English & Drama, and a Masters in Creative Practice in association with the Royal Exchange Theatre; he is a fully qualified teacher and a Fellow of the HEA. Lee is a Lecturer in Performance at the University of Salford, where his research interests centre around childhood and embodiment in European contemporary performance. Well-respected in the field, his international freelance work now includes consultancy for the creative industries.



Professional theatre maker and arts practitioner **Alex Barrett** graduated from the Manchester School of Theatre with a degree in Drama & Contemporary Performance. Alex is the founder and Artistic Director of the Manchester-based Construct Theatre Project, where directorial credits include original adaptations of *Animal Farm*, *The Tempest*, *Mythos* and *The Colour Out of Space*, all at The Edge Theatre and Arts Centre, where he previously ran the Young Actors Company. Alex also previously worked as an associate at The Lowry through the Stage Directions initiative, where he worked between schools and professional companies on theatre-making projects with young people. Alongside his long-standing work at RPA, Alex recently directed a production of *Replica* for NT Connections at The Lowry, and a revival of *Animal Farm* at The Edge. As a recent recipient of Arts Council England funding, Alex is currently in R&D for his next professional project, *Rites*, a Construct and Red Players joint venture.



RPA Coordinator **Jennifer Sadow** is a fully qualified and experienced school teacher, with a degree in Childhood & Youth Studies and a PGCE in Primary Education. Jen has extensive knowledge and experience in working with children and young people; having taught all core subjects across all years in the primary sector, she has a sound understanding of education and the curriculum, and specialises in the teaching of speaking and listening and drama-in-education. At RPA, Jen supports the delivery of workshops, and leads the facilitation of performances as both our company Production Manager and Stage Manager. Alongside key administrative duties, she provides pastoral support to our members and liaises with parents and guardians; she is also the Academy's safeguarding lead and is a licensed chaperone. Jen also works as an Associate Talent Agent at the RPM casting agency.

#### 6] CONDUCT

We ask all members to attend class with a keen willingness to learn, to embrace challenge, and to actively engage in the work with presence, energy, and enthusiasm.

While individuality and creative expression are actively encouraged, we expect an impeccable level of discipline from all members at all times, and operate a zero-tolerance policy on matters of disrespect, disobedience, and disorder – any disruptive participants will be excluded immediately.

## **7] ATTENDANCE**

Members are expected to attend every class. New material will be introduced regularly, and attendance at all sessions is imperative to the development of each member and the group as a whole. Missing one workshop or rehearsal can hinder everyone's progress; we therefore ask you to make every effort to attend every session. We do understand, however, that this may not always be possible, and request that you let us know in advance of the session for any planned absence, or as soon as possible before/during the session if you are running late or unable to attend.

Punctuality is also fundamentally important. Ideally, members should aim to arrive 10 minutes before the session, ready to start work on time. Any member arriving more than 5 minutes late is welcome to stay and observe, but may not be able to directly participate in all class exercises.

## **8] MEMBERSHIP FEES**

Membership to the Academy costs £60.00 per calendar month (additional sibling places reduced to £40.00 per person). We request that all payments are made by Standing Order on the 1<sup>st</sup> day of the month in advance. Payments are made via bank transfer to the following business account:

**Acc. Name:** Red Players    **Sort Code:** 77-48-14    **Acc. Number:** 00047131    **Ref.:** RPA+surname

Unlike some drama schools, we do not require members to pay tuition fees upfront for a set time (e.g. termly). While we do not ask you to make this commitment contractually, we do ask that you view the Academy as a long-term training programme, subscribing for at least one academic year.

## **9] SHOWCASE**

Each summer, we aim to present an annual Showcase Performance at a theatrical venue. This performance gives friends, family, and invited professional guests from industry the opportunity to see the work and progress of our members under conditions reflecting professional practice.

In order to support the costs incurred in producing a production of this kind, it is expected that each member/family will purchase a minimum of four tickets for the performance. Additionally, for most performances, various costumes, props and other such materials will inevitably be required – for much of the time these will be supplied by the Academy, but individuals may on occasion be asked to source or fund particular items; this will be communicated if/when the need arises.

When we move into rehearsal mode, full commitment to the entire production process is required of all members; this may include attending additional rehearsals outside of regular class times.

## **10] HOLIDAYS**

Classes run throughout the academic year (September to July), with a break over Christmas and at Easter. As we have members across multiple LEAs with varying school calendars, our classes will continue to run during all other school holidays in order to maintain provision during term-time.

As our charge for tuition is in the form of a rolling membership fee, we ask that you continue to make payment during the month of August. While there are no weekly classes during August, this month's payment constitutes an annual registration fee and covers ongoing administrative costs, offsets our costs for any calendar months with five weekly sessions rather than three or four, and contributes towards the sizable costs involved in producing and presenting our Showcase.

*Holiday Workshops:* throughout the year during school breaks, RPA will usually offer intensive programmes of activity. Academy members who wish to enroll on any of our holiday courses (which are also open to non-members) will receive an exclusive members' only loyalty discount.

## **11] HOMEWORK**

It is sometimes necessary to set work to be completed outside of class time, such as line-learning, researching a role, reading material, or watching a video or film/TV programme, for example. It is imperative that this work be completed or else it may impact individual and whole-group progress.

## 12] THEATRE VISITS

Occasionally, RPA may organise group visits to see live theatre together. Other trips may include visiting museums and art galleries, the cinema, or seminars and other events. We ask that you make every effort to participate in these activities, wherever possible, for full benefit of the course.

## 13] HEALTH & SAFETY

The health and safety of everybody at RPA (both student members and staff) is of paramount concern. Due to the active and physical nature of much of our work, we endeavor to undertake appropriate risk assessment of classes and performances in the interest of all members' wellbeing.

The Academy has a dedicated Safeguarding Policy drawn up on the basis of legal responsibilities and best practice guidance, which is reviewed annually at the start of the academic year; members and parents/guardians are welcome to review this at any time. All staff with direct supervisory responsibility have Enhanced DBS (formerly CRB) clearance. RPA Coordinator, Jennifer Sadow, is the Academy's nominated Safeguarding Officer, and is trained in safeguarding children.

## 14] EQUALITY, DIVERSITY, INCLUSION

At the Academy, we are fully committed to promoting Equality, Diversity and Inclusion, and to eliminating any discriminatory practice made on the basis of age, sex, gender, religion, sexual orientation, nationality, colour, creed, ethnicity, class, disability, or any other aspect of an individual's background and identity. Our ethos as a company is to embrace and celebrate both our differences and similarities alike, and to encourage social harmony through creative practice.

Note: although the Academy is firmly committed to fairness and EDI, for the purposes of casting we must inevitably make creative decisions based on a participant's age, appearance, ability etc.

## 15] PHOTOGRAPHY & VIDEO

RPA may take photographs and record video during all workshops and rehearsals for our own documentation. Performances will also be recorded. Some of this material may be used for promotional purposes, such as on our website or social media pages and in other advertisements.

~ ~ ~

We are delighted to welcome you as a member of the Academy, and look forward to working with you on your journey of creative exploration and artistic expression.



Lee Battle BA (Hons) MA PGCE FHEA  
Director & Principal (RPA)  
Casting Agent (RPM)

---

### **Key Contacts:**

*Main point of contact for weekly sessions and during class times:*

**Alex Barrett** | Lead Tutor | alex@redplayersacademy.com | 07921013982

*For general administrative queries:*

**Jennifer Sadow** | Coordinator | jen@redplayersacademy.com | 07441396970

*Regarding the Academy or Agency more broadly:*

**Lee Battle** | Principal | lee@redplayers.co.uk | 07441396970 (shared business line)

**[www.redplayersacademy.com](http://www.redplayersacademy.com)**



"You will never find a better place to train and perform than Red Players Academy."

"Nothing can compare to what Red Players Academy offers. Highly recommend to all that are interested in being part of the industry."

"It is intense, challenging, and nothing like what you expect a drama school to be. It is more!"

"Lee is the most inspiring, effective and genuine teacher I've ever had... I will keep these lessons with me for the rest of my life."

"An eye-opening experience...has allowed my work to become raw, truthful and natural...has prepared me for the industry of acting."

"Really impressed with the whole ethos and approach to all aspects of this inclusive, process-driven and contemporary acting course."

"The enthusiasm, commitment, ethos and quality of teaching shine through, alongside friendships and shared experiences."

"The professionalism is amazing...has benefitted not just my acting but also life skills... I have learnt so much."

"Lee is a creative genius...no other drama teachers compare! Knowledgeable, approachable, engaging, and supportive mentor."

"The creativity of the whole team is exceptional and results in a contemporary performance at the end of the week."

"Your drama school helps kids feel they belong somewhere in this unpredictable world."

"Friendly, welcoming, fun and professional classes. RPA is the best drama school ever!"

"The staff are incredible and treat each performer with immense respect that would be given to a professional."

"Lee and the other teachers are fantastic, taking the time to invest in each student.  
As a parent, it's a delight to see my daughter so energised, inspired and full of confidence."

"I am so lucky to have had the opportunity to work with the RPA team and I will forever value the people, the friendships, the style of work, the skills I have learnt, and every single moment I have spent at RPA."



"Lee is simply the most inspiring teacher I've ever encountered."

"My daughter has benefitted from being pushed to work in a professional manner. The combination of focused learning and a welcoming atmosphere make RPA unique."

"My daughter took the RPA summer workshop in 2023. It was really demanding and intense, but she thoroughly enjoyed it. The teachers are highly qualified and bring out the best in the students, taking into account their individuality and building on their strengths. Would highly recommend."

"Having tried more traditional performing arts schools, nothing can compare to what Red Players Academy offers. We are encouraged to look beyond the classical types of performance and explore the beauty of creative movement."

"My daughter loves everything about RPA. From the drama lessons, to the friendships, to the confidence building, to the professionalism, to the inspiration... It's just so much more. They are amazing!"

"Red Players Academy offers a unique experience to budding actors... Lee and his team are professionals who provide an intense experience to young people who are passionate about drama."

"Superb acting class. The teachers are extremely professional and very approachable. My daughter has gained fantastic acting techniques along with some lovely new friends. I highly recommend this outstanding Academy!"